



TRBONET PLUS CONTROL ROOM SOLUTION FOR MOTOTRBO™

Central coordination is the key to an effective workforce. That's why it's so important to have a control room solution in your two-way radio system. You need solution that builds on traditional dispatch functionality to deliver business-critical tools like location tracking, voice recording and system monitoring. TRBOnet PLUS is a flexible, customizable solution that gives you exactly what you need to manage your organization reliably, efficiently and cost-effectively.

Versatile and powerful, MOTOTRBO fuses the best of two-way radio functionality with the latest digital technology, to give you instant communications across your organization. With a comprehensive portfolio of radios, accessories, systems and applications, MOTOTRBO can take you to new levels of safety, productivity and efficiency.

TRBOnet PLUS is a control room solution that's closely integrated into the MOTOTRBO system infrastructure to deliver flexible and scalable console functionality. Based around an IP network, it gives you smooth scalability so that your system can grow with your organization's needs.

The solution's IP connectivity also enables you to deploy TRBOnet PLUS as a distributed system, with consoles located wherever you need them. A highly customizable user interface allows you to manage your organization in the way that suits you best. The solution is modular, so you only need to buy the functionality you need.

TRBOnet PLUS sits at the heart of your business communications system, and is designed to be iron-tight reliable. The architecture has no single point of failure, and has options for redundancy and distributed event and voice data storage.



**SOLD AND
SUPPORTED**

MOTOROLA SOLD AND SUPPORTED

Exclusively available through Motorola Solutions and supported by our customer service teams, TRBOnet PLUS offers the most advanced features for radio fleet management, dispatch and voice and data communications. It uses the MOTOTRBO wireline network interface to interface directly with the system over IP. This improves system stability, security and reliability but also reduces hardware overheads and can lower maintenance costs. TRBOnet PLUS has undergone stringent quality testing in the Motorola Solutions labs to ensure it meets the highest standards of quality and delivers an exceptional customer experience.

POWERFUL FUNCTIONALITY

TRBOnet PLUS keeps operators in complete control of even the most demanding multi-site systems. Designed with the dispatcher in mind, a wide variety of everyday operations can be automated using defined rules and smart tools such as scheduled text messages, voicemails for offline radios or geofencing. Dispatchers can now monitor the status of users and their location with live updates, while assigning tasks to the most relevant resources, and improving the personnel safety with automatic alarms. TRBOnet PLUS also offers system monitoring tools to help you maintain the health of your radio system. It works seamlessly with Motorola's WAVE solution to give your dispatcher full voice access to the mobile devices on your MOTOTRBO system.

SIMPLE AND ROBUST

A key benefit of TRBOnet PLUS is the MOTOTRBO wireline network interface which establishes a direct link between the control room and the radio system. Connectivity is simplified for a more cost-effective and reliable solution architecture. Dispatchers benefit from an enhanced experience with full transparency, recording of all group and individual calls and more communications security from the radio to the application.

MODULAR AND FLEXIBLE

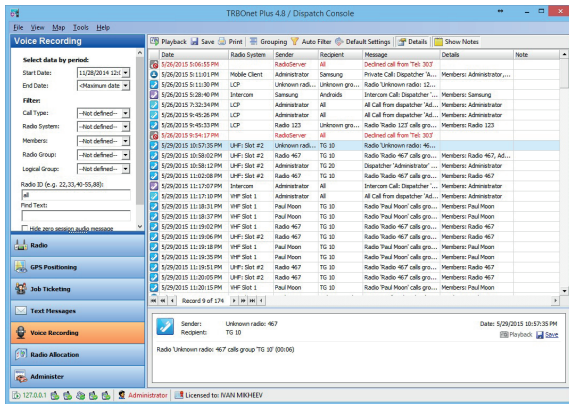
TRBOnet PLUS is modular so you only have to buy the features you need. It can be tailored to individual requirements to ensure optimum performance across a range of industries. It is also easily scalable from small to large systems that are ready to grow with your business as it expands.

TRIED AND TESTED

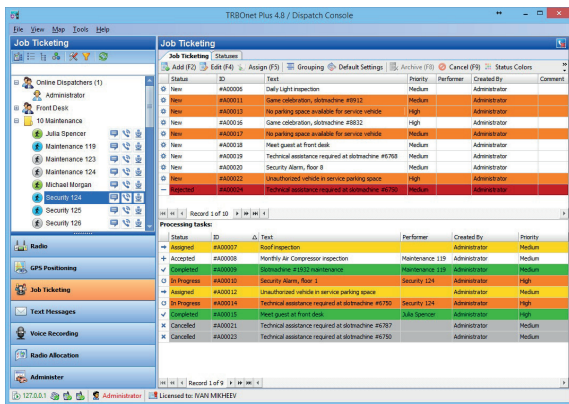
Developed specifically for MOTOTRBO professional digital two-way radio systems, TRBOnet PLUS has been tested in Motorola's engineering labs to ensure the highest quality performance and seamless integration into the MOTOTRBO system.



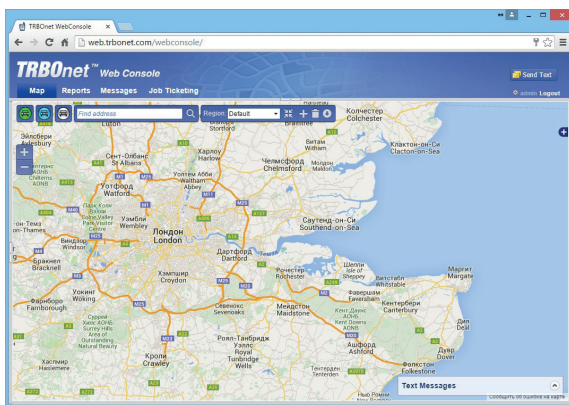
GPS Voice Dispatch



Voice Recording



Work Order Ticketing



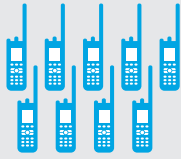
Web Client



Products bearing the "Motorola Solutions Sold and Supported" logo are premium products developed by Motorola Solutions partners to fulfill critical functions in MOTOTRBO™ systems. These products are tested and integrated in direct cooperation with Motorola. They are sold through Motorola Channel Partners and supported through Motorola's customer service teams. TRBOnet PLUS is delivered through Motorola's partnership with Neocom Ltd.

FEATURES

CORE



FLEET ADMINISTRATION

Efficiently manage fleet operations and remotely control radios. Get live status updates and configure the radio to send online/offline reports to the server.



EVENT LOGGING

Log all system events including voice calls, text messages and status changes. Customize rules, filter and group events or generate reports detailing location and radio status.



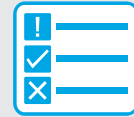
ALARM AND LONE WORKER

Improve the safety of personnel with automatic alarms and lone worker protection. The alarm can also be sent as an automated message, e-mail or SMS.



VOICE DISPATCH

Provide communications between the dispatcher and remote radios. Make broadcast, group, private, remote monitor or emergency calls quickly using programmable shortcuts.



JOB TICKETING*

Create, assign and monitor job tickets through the radio network to deliver routine tasks more efficiently. Radio users can accept or decline the job ticket by simply pushing a button.



TELEMETRY*

Monitor and manage remote equipment from the control room. The system supports native MOTOTRBO telemetry with multiple profiles supported for different devices.



TEXT MESSAGES AND EMAIL

When you need silent communications or referencable instructions, send broadcast, group or private text messages. Radio users can text back to the dispatcher.



AES ENCRYPTION

Secure your communications with the industry-standard 256-bit encryption scheme.



INDOOR POSITIONING*

Track personnel and business assets inside your facility with a Bluetooth-based indoor location system.



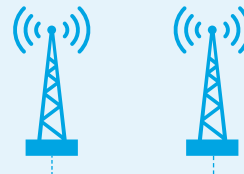
EXTENDED ALARM MANAGEMENT

Automatically notify your staff of important events, using job tickets, text messages or voice calls.



VOICE RECORDING

Continuous voice recording of all calls with playback for analysis, reporting or training purposes. Audio files are stored in MP3 format on the Radio Server and Dispatcher.



IP SYSTEM BRIDGE**

Communicate between radios located on different networks. Interconnect geographically distributed systems and set up permanent and dynamic bridging of voice and data calls.



GPS TRACKING

Follow workers, vehicles and business assets in real-time to ensure maximum safety and productivity. View routes, set up GeoFencing and log radio movements using a configurable set of rules.



DATA WEB CLIENT

Empower remote dispatchers to access the system using a web interface.



RF COVERAGE MONITORING*

Maximize system performance and make sure everyone is connected with RF coverage maps. These provide a graphical representation of network coverage based on the RSSI level of signals received from GPS-enabled MOTOTRBO radios.



PHONE INTERCONNECT*

Make and receive calls between MOTOTRBO radios and telephones. Empower your dispatcher to make and receive telephone calls through the dispatcher console.

OPTIONAL

*Not available for Connect Plus systems

**Not available for Capacity Max systems

SPECIFICATIONS

RADIO SERVER PC SPECIFICATION	DISPATCHER PC SPECIFICATION	IP BANDWIDTH	MOTOTRBO HARDWARE
<ul style="list-style-type: none"> Intel Core i5 processor Windows 7 / 8 / Server2008 32 or 64 bit 3 GB RAM 180 GB Hard drive MS SQL Server 2008 Express Edition or higher 	<ul style="list-style-type: none"> Intel Core i3 processor Windows 7 / 8 Professional 32 or 64 bit 3 GB RAM 180 GB Hard drive Sound card Microphone and Speakers or regular PC Headset 	<ul style="list-style-type: none"> Between Server and Repeater: 64 kbps per repeater Between Server and Client: 64 kbps per client per voice channel 	<ul style="list-style-type: none"> Radio Firmware Version: R01.12.02 or higher Repeater Firmware Version: R02.30.02 or higher

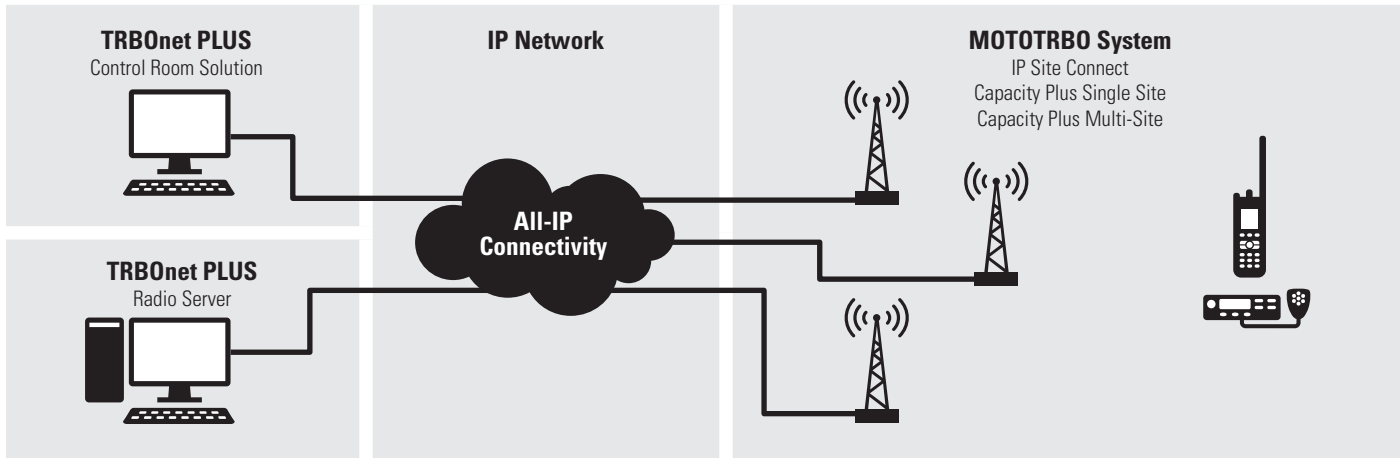
Note: Final system specifications will depend on actual MOTOTRBO system size and configuration.

LANGUAGES SUPPORTED

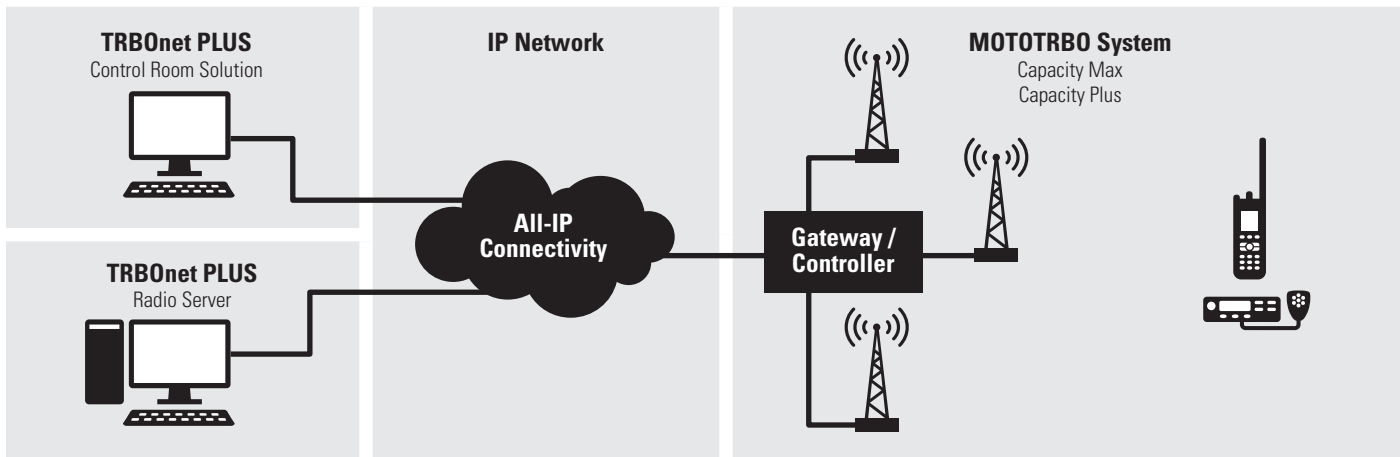
English, German, Italian, Russian, Spanish.

ARCHITECTURE

1: Direct connection to repeaters, for IP Site Connect, Capacity Plus systems



2: Connection to controller, for Capacity Max, Connect Plus systems



www.motorolasolutions.com

MOTOROLA, MOTO, MOTOROLA SOLUTIONS and the Stylized M Logo are trademarks or registered trademarks of Motorola Trademark Holdings, LLC and are used under license. All other trademarks are the property of their respective owners. © 2015 Motorola Solutions, Inc.

All rights reserved. Specifications are subject to change without notice. All specifications shown are typical. (11-2015)

MOTOTRBO™
DIGITAL REMASTERED.